

1 Requirements

The CitySync integration works with any exacqVision system, and multiple CitySync ANPR processors can be connected to a single exacqVision system. This document assumes that the exacqVision server and the CitySync ANPR processors are both installed and running.

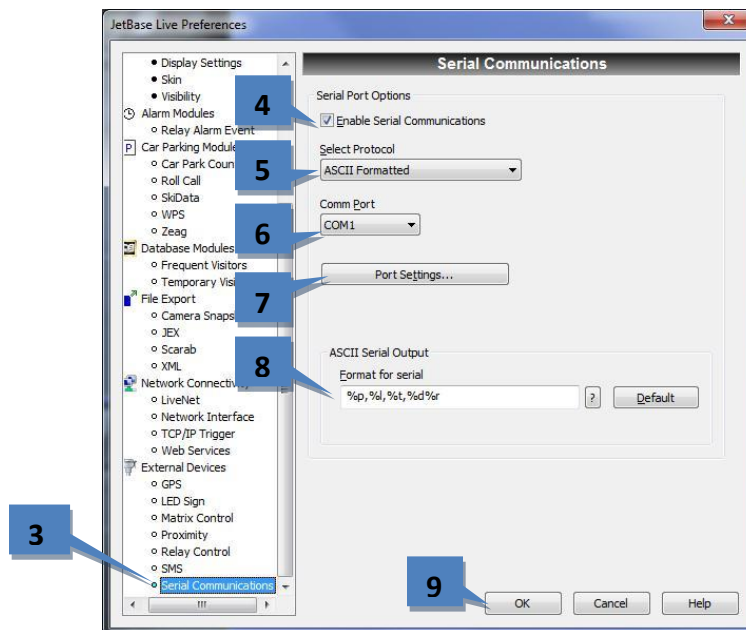
Minimum software requirements:

- exacqVision version 4.2 or later
- CitySync version 7.6 or later

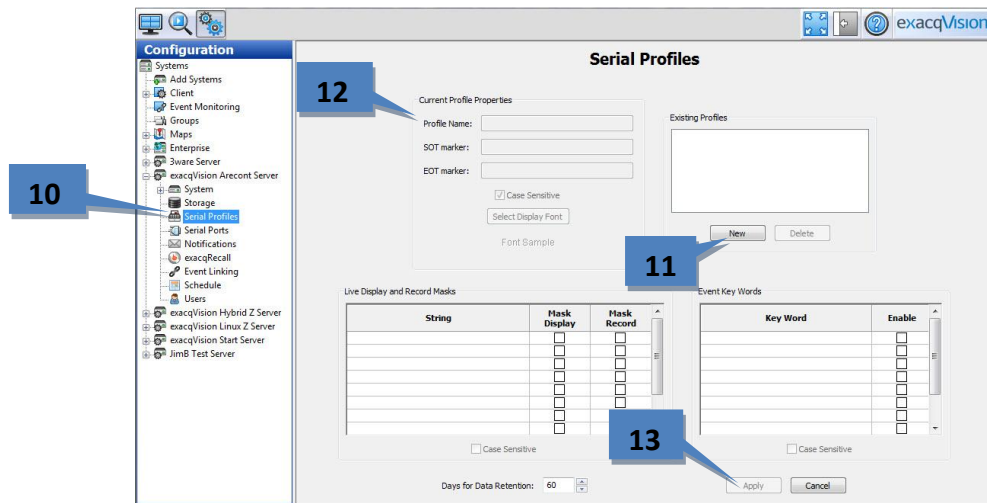
NOTE: CitySync cameras cannot be connected to or stream video directly to an exacqVision system. Similarly, exacqVision cameras cannot be directly connected to a CitySync ANPR processor.

2 Configuration

1. On the CitySync ANPR processor, log on to JetBase Live.
2. From the **JetBase Live** menu, select **Options, JetBase Live Preferences:**
3. Scroll to the bottom and select **Serial Communications.**
4. Select **Enable Serial Communications.**
5. From the **Select Protocol** drop-down menu, select **ASCII Formatted.**
6. From the **Comm Port** drop-down menu, select an available port.
7. Click **Port Settings** and note what the settings are. (These will be needed in the exacqVision Serial Ports configuration later.)
8. In the **ASCII Serial Output** field, enter the contents of the serial message. (Click the question mark button for examples.)
9. Click **OK.**



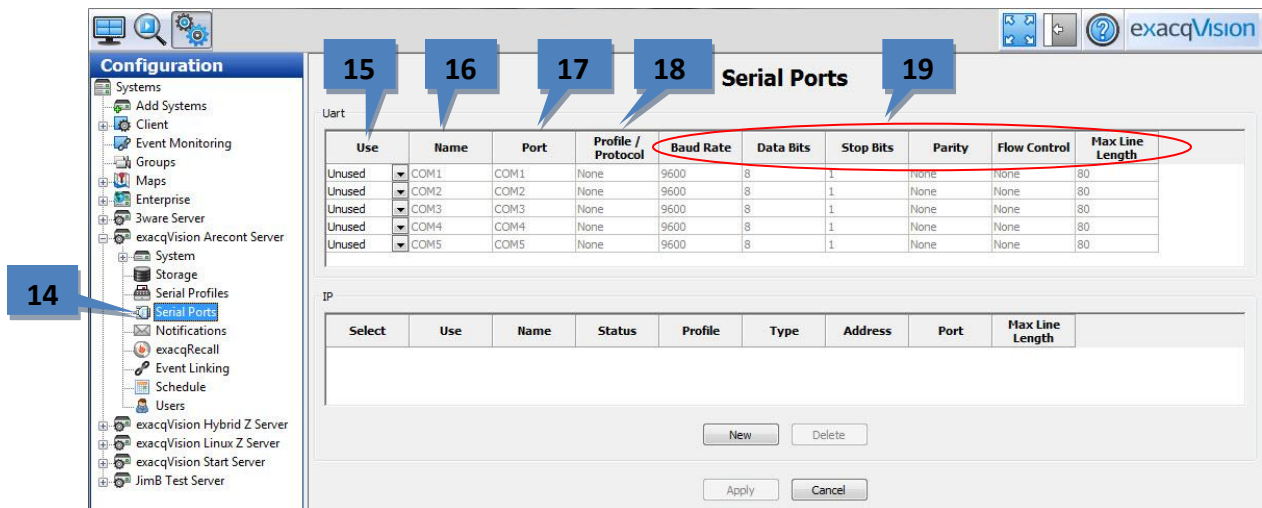
10. On the exacqVision server, select **Serial Profiles** from the tree (see image below).
11. Click the **New** button under **Existing Profiles**.
12. Enter a new **Profile Name** such as **CitySync**.
13. Click **Apply**.



14. On the exacqVision server, select **Serial Ports** from the tree (see image below).

NOTE: In a typical installation, you will enter information in the **Uart** section of the Serial Ports page. If your CitySync ANPR processor is not located near the exacqVision server, an RS-232 to Ethernet converter can be used to transmit the serial data via IP protocol; in that case, enter data under the **IP** section.

15. In the **Use** column, select **ATM**.
16. In the **Name** column: select a name such as **CitySync**.
17. In the **Port** column, select an available port.
18. In the **Profile/Protocol** column select the profile name you created in step 12.
19. In the **Baud Rate**, **Data Bits**, **Stop Bits**, **Parity**, **Flow Control**, and **Max Line Length** columns, enter the parameters you noted in step 7. Click **Apply** when finished.



20. If more than on CitySync ANPR processor is connected to the exacqVision system, repeat the Serial Profile and Serial Port configuration for each remaining processor. Otherwise, continue with the following steps.

21. Click on the **Live Page** icon in the exacqVision menu bar:



- 22. Double-click the name of the profile you created to display it in the right panel.
- 23. You should now see scrolling text based on the format you picked in **Step 4d**.

