



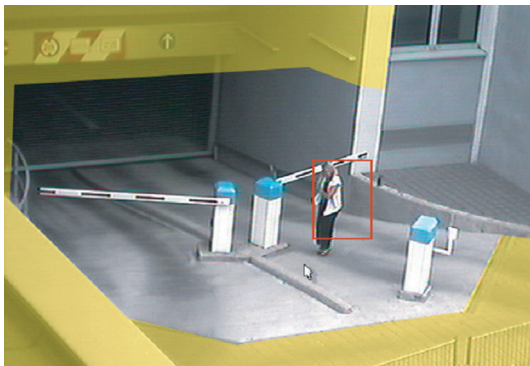
# Intelligent Video Analytics Server

– Next generation motion detection –

**Reliable alarm and intrusion detection: Eliminate 95% of all false alarms**

- ▶ Runs on any Linux or Windows PC
- ▶ Runs dedicated or on same machine with other applications (like VMS)
- ▶ Hundreds of analytical channels on a single machine
- ▶ Easy integration and configuration

**\$299**  
MRSP per channel



- **Adaptive Outdoor Analytics:**  
Ignore environmental variables like tree branches moving in the wind, rain, snow, change in lighting, reflections and moving shadows
- **3D Video-Awareness:**  
Distinguishes between people and vehicles based on aspect ratio
- **Electronic Fence / Trip Wire:**  
Secure a perimeter by selecting the boundaries of the areas of interest
- **Directional Detection:**  
Alarm triggers when subjects motion in a direction
- **Sabotage Detection:**  
Alarm triggers when view is obscured

Integrates smoothly into and is able to run seamlessly on the same server as all Video Management Systems such as:



artec  
technologies

AXIS  
COMMUNICATIONS

DiviCro  
INTELLIGENT VIDEOSURVEILLANCE SOFTWARE

exacq  
Technologies

GRIFFID  
DIGITAL SURVEILLANCE SYSTEMS

ipConfigure

logiware®

MIRASYS  
Make it visible

netavis  
LUB OBSERVE

OnSSI  
IP To The Core

SeeTec  
Netzwerkbasierete Videoüberwachung



Zelaris IP

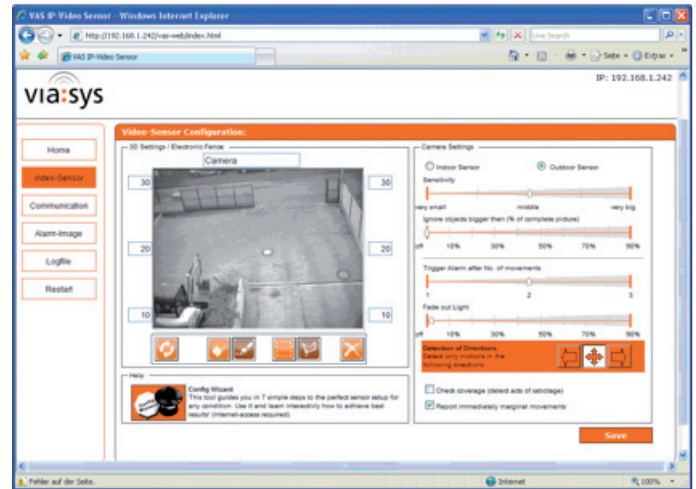


## Installation

- ▶ Via installer on any Windows or Linux PC or Server
- ▶ Dynamic expanding from one to unlimited numbers of analytical channels
- ▶ Easy and quick installation and configuration

## Configuration

- ▶ Via Web interface on any port of the server
- ▶ Includes Installation Wizard



## Hardware-Specifications

Minimal hardware requirements:

<b>CPU</b>	AMD or Intel Dual Core CPU (2600 MHz and above)
<b>RAM</b>	1 GByte RAM
<b>Operating System</b>	Linux (any distribution ok, UBUNTO recommended) Windows from Windows XP
<b>Network</b>	100 MBit ok, Gigabit Network recommended
<b>Storage</b>	5 GByte mass storage

## Software-Specifications

<b>Number of channels</b>	Unlimited number of analytical channels (only limited by the CPU resources and network bandwidth of the host machine). Up to 128 channels on a dedicated server.
<b>Supported Cameras and Video Encoders</b>	Acti, Axis, Basler, eneo, IQeye, JVC, Luminera, Mobotix, Panasonic and any IP Camera that delivers JPEG snapshots
<b>Video Standard</b>	IP – JPEG (Motion JPEG) MPEG2*, MPEG4*, H.264*
<b>Resolution/Image Size</b>	All Resolutions including Megapixel formats like NTSC: 320 x 240, CIF: 352x288, VGA : 640 x 480*, 4CIF: 704x576*, 1.600x1.200
<b>Frames per sec</b>	min. 2 images / sec (2 FPS) max. 25 images / sec (25 FPS)*
<b>Video Input</b>	one IP camera per analytical channel

## Viewer Recording

via 3rd party system or viasys PC-Client  
Triggering of 3rd party systems or generic TCP/IP event notification

## Compression

see "Video Standard"

## Storage

via 3rd party system, no internal storage – see Recording

## Password

yes

## Configuration

via Web-Browser

## Selective Setting

configurable indoor and outdoor sensitivity, distance in field of view, full image analysis, electronic masking, sensitivity discriminates between objects based on size

## Actions

Triggering via TCP/IP to 3rd party system or activation of dry contacts on host machine

## Recording

by third party systems in any desired resolution and frame rate\*

## Logging

Logging of the last alarm images: pre-alarm images, alarm images, postalarm images

## Free Trial

Please check for a free trial and download on our website at [www.viasys-iv.com](http://www.viasys-iv.com).



Runs on Linux and Windows

## Distribution

Please contact:

### Viasys North America

Anson Moran  
410 13th St. B  
Huntington Beach, CA 92648  
714.881.9962  
[moran@viasys-iv.com](mailto:moran@viasys-iv.com)